

V-FORCE 2 UNI

NUMERIC UNDERPINNER

Designed for

Bespoke
Framer

Retail
Framer

Medium
Contract Framer

Volume
Contract Framer



Electric supply

110 / 230V single phase
50 / 60 Hz
0,5KW

The V-FORCE 2 UNI works with **UNI wedges**

Speed



Moulding capacity



Ease of use



Space required



THE V-FORCE 2 UNI FROM CASSESE

is a numeric underpinner (v-nailer) with high speed joining capacity.

The V-FORCE 2 UNI is easy to use thanks to its user-friendly touchscreen and its quick and easy joining set up.

The V-FORCE 2 UNI can join high and wide mouldings while ensuring a perfect joining quality thanks to the retractable tightening clamps system.

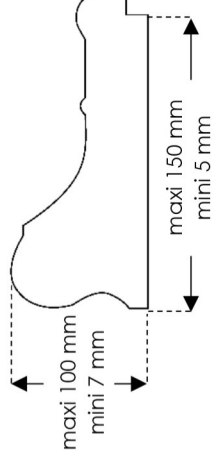
To improve your production time, you can register up to 3 000 favorites moulding profiles with iconic identification.

The V-FORCE 2 UNI uses "UNI" wedges and has an easy system for loading the wedges in order to minimize the loss of time.

DIMENSIONS

Length	650 mm
Width	600 mm
Height	1150 mm

MOULDING CAPACITY (mm)



AIR SUPPLY

6 bars

1 L / wedge

WEIGHT

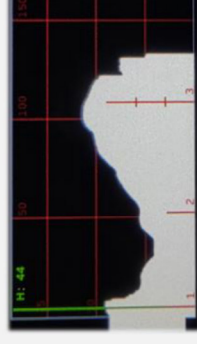
103 kg

NEW OPTIONNAL ACCESSORY

The S.M.C. System (Smart Moulding Configuration)

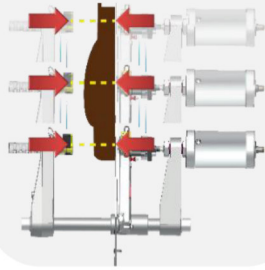


Thanks to a cutting-edge laser, you can scan your moulding and the machine will suggest you the best positions, numbers and size of wedges needed.



MADE IN
FRANCE

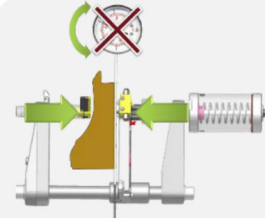




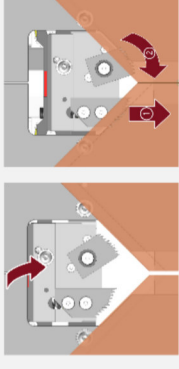
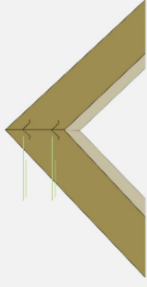
The Smart Wedge Drive System™

Auto-alignment
No need to adjust top clamp placement

Self-adjusting pressure
No need to adjust air pressure between Hardwood and Softwood



High speed joining = 3360 cycles / hour
(with 2 positions per corner)



Retractable and very powerful Ultra™ clamps (patented)

NEW INTERFACE AND CUTTING-EDGE ELECTRONICS (DRIVER, SCREEN, PROGRAM CONTROLLER)

User-friendly touchscreen and easy to use menus



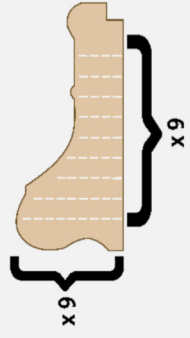
Quick and Easy joining set up with iconic identification



Complete tutorial to guide you step by step



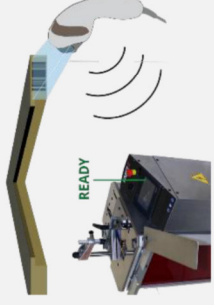
3 000 Favorites Profiles
(Import your MACH profiles)



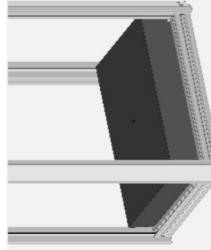
9 wedge positions

9 wedges per position

Barcode Ready
(compatible with MACH, CS486, CS3099 & CS4008 joining files)



Adjustable rod clamp
Magnetic chevron clamp
Solid crossbar



Concrete reinforced structure to absorb vibrations



Aluminum
Plastic for noise reduction

New sandwich aluminum panel to reinforce the robustness

INCLUDED ACCESSORIES



Z3078



Z26999



Z21525



Z18065



Z1783



Z21524



Z24703



Z25790



Z1814



Z29729



Z1813



Z21476

OPTIONAL ACCESSORIES



Z21476



Z21524



Z506



Z25975



Z25790



Z1814



Z29729

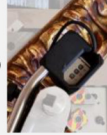


Z29729



Z29729

The S.M.C System
(Smart Moulding Configuration)



Z29729